



Fixture Type  
Materials  
Finish

Surface  
Aluminium  
White

Lamp Type  
Lamp Quantity  
Lamp Included  
Wattage  
Input Voltage  
Delivered Lumens  
Kelvin Temperature  
CRI  
Power S Type  
Power S Quantity  
Power S Location  
Dimming Type

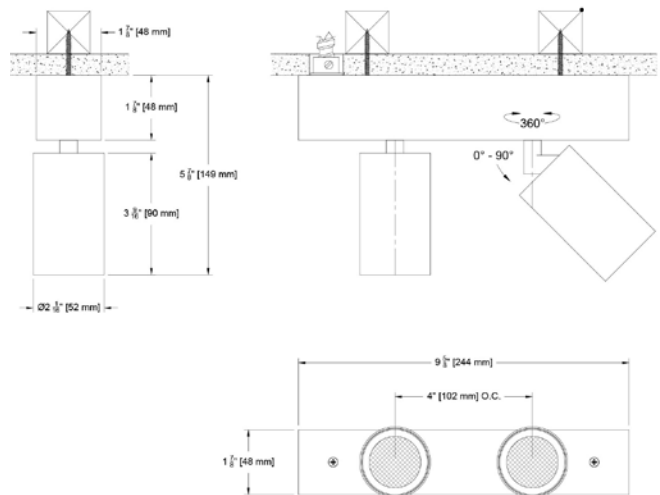
LED  
2  
Yes  
9 W  
120-277 V  
707 lm  
2700 K  
90  
Driver  
1  
Integrated  
ELV

Designer:

SLI

Listings

UL  
DAMP




### Scope Vardi


The Vardi is a new collection within the Scope family of 2 and 3 inch aperture fixtures. This collection is offered in a surface mount multi-head or monopoint configuration. The multi-head features 2" diameter monopoints in 2 and 4 head configurations. Each fixture provides more than 700 lumens per head yielding over 2800 lumens in the 4 point configuration. The fixture architecture allows 360° of rotation and 90° of tilt to put the light where you need. With field changeable optics, each head can be tuned to the desired distribution creating a highly versatile lighting device. The heads are attached to a surface mount bar containing an integral driver allowing for easy access service from below. You have found the Scope Vardi multi-head monopoint datasheet and hope you enjoy the details.

#### Key Points (SCVB-RA)

##### Housing

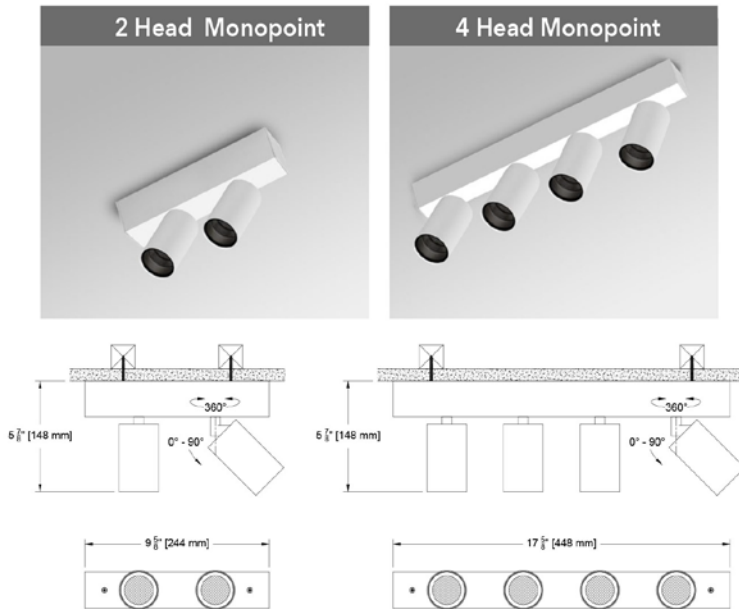
- Surface mounted in 2 or 4 head configuration
- Extruded aluminum with bolt on end plates
- Powder paint finish with housing, stem and head color match
- Black or White as standard - contact factory is alternative finish is desired
- 2" head aperture
- Adjustable 360° degree rotation and 90° degree tilt
-  us CSA listed to UL 1598 - damp rated

##### Source / Optics

- 2 beam spreads - 15° and 30°
- UGR values <13 in most UGR table cells when used as a straight downlight
- Field changeable optics
- Accepts 2 pieces of lamp (reflector) optical media
- Up to 748 delivered lumens from a single head
- <2 MacAdams Ellipses (<2 SDCM) for fixed white
- 2700, 3000, 3500, 4000K
- 90+ CRI, 60+ R9 Standard
-  Supports CA Title 24 Part 6 requirements to JA8



##### Driver And Control

- Universal 120-277v
- Integral driver within surface mount bar
- Phase or 0-10
- 1% dimming with 0-10



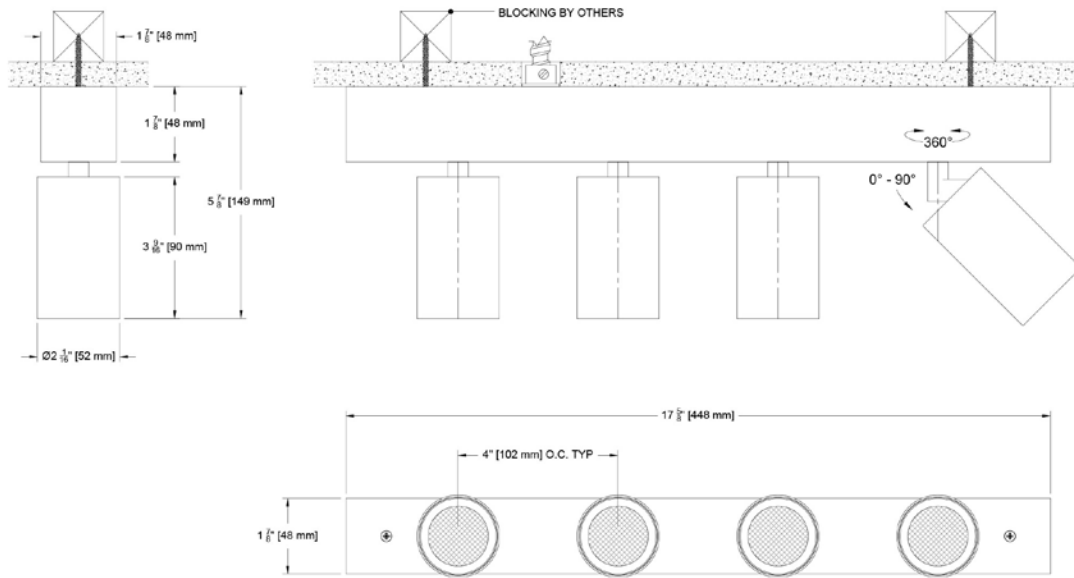
ROUND Beamspreads		15°				30°			
Source	System watts (W)	Delivered Lumens (lm)	Lumens/Watt	Peak CD	10% Field	Delivered Lumens (lm)	Lumens/Watt	Peak CD	10% Field
Citizen C9	9	707	79	6374	32°	748	84	2500	50°

Ordering Code Example: SCVB-RA-4-SM-C9-15-30-C1-W-91L

FIXTURE	HEADS	MOUNTING	SOURCE / WATTS	CCT	BEAM	DRIVER / CONTROL	HEAD FINISH	ACCESSORIES
SCVB-RA								
Scope Vardi 2" Multi Head Monopoint	2 2 head  4 4 head	SM Surface Mount* (Integral Driver)	Citizen  C9 ●● 9W 707Lm* 90+CRI, 60+R9  ●● Supports CA Title 24 part 6 compliance to JA8 requirements  *Based on 15° Beam	27 2700K  30 3000K  35 3500K  40 4000K	15 Spot  30 Narrow Flood	C1 0-10^ 1.0%, UNV (120-277V) linear  C2 ELV/Triac^ 1.0%, (120V) linear  Note: integral driver standard	B Black Paint  W White Paint	Reflector (lamp) Media  91L Solite*  97L Black Hexcel Louer*  XXL Other Reflector (lamp) Media*  Other  STM Stem standard length 3/8" For custom size, indicate in inches
								



4 Head Monopoint (Integral Driver) Flanged Surface Mount (SM) (SCVB-RA-4-SM-)



## Photometric Table

All data below are delivered lumens based on goniometer measurements of production representative product at 3000k from a SINGLE HEAD. Simulations will need to place additional head IES files 4" on center in calculation software. All lumen values can vary +/- 10% from LED manufacturer rated flux range.

ROUND Beamspreads		15°				30°			
Source	System watts (W)	Delivered Lumens (lm)	Lumens/ Watt	Peak CD	10% Field	Delivered Lumens (lm)	Lumens/ Watt	Peak CD	10% Field
Citizen C9	9	707	79	6374	32°	748	84	2500	50°
CCT Multiplier		<p>Beam angle 15.6°</p>				<p>Beam angle 31.4°</p>			
CCT	Citizen								
2700	0.95								
3000	1.00								
3500	1.02								
4000	1.03								

