



Fixture Type
Materials
Finish

Garden Fixture
Solid Copper
Copper
*consult factory for other finishes

Lamp Type
Lamp Quantity
Lamp Included
Wattage
Input Voltage
Delivered Lumens
Kelvin
CRI
Power S Type
Power S Quantity
Power S Location
Dimming Type

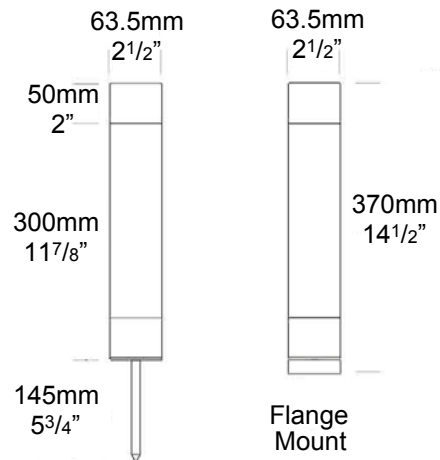
LED
1
Yes
6W
6 VDC
510
2700K
90
Driver
Up to 5 fixtures
Remote
0-10V

Designer

Hunza

Listings

UL / CE
DAMP / WET



PURELED SPECIFICATIONS

LED Chip	Cree XHP-50-2 Plug and Play field replaceable LED board
Luminaire Output	510 Lumens @ 1050mA (6 watts), 340 Lumens @ 700mA (4 watts), 160 Lumens @ 350mA (2 watts), delivered from luminaire with unobstructed beam.
Lumens Per Watt	85 Lumens minimum @ 6 watts , delivered from luminaire with unobstructed beam
CRI (3000K)	90+
Colour Temperatures	2700K, 3000K, 4000K
Beam Angles	360 degrees
Ingress Protection	IP56/IP66
Warranty	Electronics = 5 years Body Cop/ SS = 10 years Body Aluminium = 5 years
Standards	AS/NZS 61046 cUL 1838, 2108 CSA C22.2 No.250.7, No.250.0-08 CE



PRODUCT CONFIGURATION

Please fill in appropriate codes into boxes provided

Cat. No. BOL300/L

Luminaire	Power	Material/ Finish	Beam	Colour	Accessories
<input type="text" value="BOL300/L"/>	<input type="text"/>	<input type="text"/>	<input type="text"/>	<input type="text"/>	<input type="text"/>
<p>S 1050mA Input, Series Wired 6W</p> <p>D3 12VAC Input, Parallel Wired 2W</p> <p>D7 12VAC Input, Parallel Wired 4W</p> <p>D10 12VAC Input, Parallel Wired 6W</p> <p>D24 24VDC Input, Parallel Wired</p>	<p>ALUMINIUM</p> <p>EBK BLACK</p> <p>EBZ BRONZE</p> <p>EOGR OLIVE GREEN</p> <p>EWH WHITE</p> <p>EWB WHITE BIRCH</p> <p>EDG DARK GREY</p> <p>ESTAR SILVER STAR</p> <p>ECT CORTEN</p> <p>COP SOLID COPPER</p> <p>SS STAINLESS STEEL</p>	<p>360 360°</p>	<p>2 2700K</p> <p>3 3000K</p> <p>4 4000K</p>	<p>CJK CABLE JOINT KIT</p> <p>BOLOP OPAQUE LENS</p> <p>HOOD140C HOOD 140MM CONTOURED</p> <p>HOOD140S HOOD 140MM SMOOTH</p> <p>GSBOL GLARE SHIELD <i>*reduces beam angle to 180°</i></p> <p>FM FLANGE MOUNT</p> <p>FM90 EXTERNAL FLANGE MOUNT 90</p>	
<p>SERIES, REMOTE DRIVER REQUIRED: Constant current driver Individual fixtures require 6vdc @ 1050mA maximum</p> <p>12VAC INTEGRAL DRIVER: Hunza integrated plug and play driver (included) Input:9-15VAC. Output: 6vdc @ D3=350mA, D7=700mA, D10=1050mA (1050mA limited to ≤ 40°C (104°F) ambient temperature in stainless steel)</p> <p>24VDC DRIVER: Input: 24vdc. Output: 18vdc @ 700mA constant current (non dimming). <i>Note: not for USA.</i></p>					
<p>OTHER LAMP OPTIONS:</p> <p>BOL300/H - MR16 Halogen 12V Lamp</p> <p>BOL300/SL - MR16 LED Retrofit 12V Lamp (lamps vary by market - please refer to supplier for details)</p> <p>BOL300/GUH - GU10 120/240V Halogen Lamp (body length increases for all GU10 lamps)</p> <p>BOL300/GUSL - GU10 LED Retrofit 120/240V Lamp (lamps vary by market - please refer to supplier for details)</p>					



LUMINAIRE CONSTRUCTION

CNC machined from one of the following metals:

Aluminium:

Body: Solid high corrosion resistant 63.5mm (2½") x 10mm (3/8") aluminium.

Pole: 63.5mm (2½") aluminium.

End cap: solid aluminium 63.5mm (2½") rod, with chromate substrate and high UV resistant polyester powder coat.

Colours:

Black, Bronze, Silver Star, White, White Birch, Olive Green, Dark Grey, Corten.

Copper:

Body: 63.5mm (2½") x 10mm (3/8").

Pole: solid copper 63.5mm (2½").

End cap: solid copper 63.5mm (2½") rod.

316 Stainless Steel:

Body: 63.5mm (2½") x 10mm (3/8").

Pole: 316 stainless steel 63.5mm (2½").

End cap: solid 316 stainless steel 63.5 (2½") rod.

Anti-glare Hood:

140mm (5½") x 1.2mm (1/16") handspun aluminium, copper or stainless steel. No upward light or glare projected.

Lens:

UV stable polycarbonate lens with anti-glare mesh and dual angle reflector projects light horizontally and at 45° onto the ground.

Gaskets:

Silicone, iron impregnated 220°C (428°F)

Mounting:

Set in concrete in the ground or specify with flange mount option, which bolts to concrete, tiling or wooden decks.

Luminaire Weight:

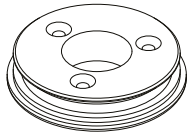
Low voltage

Alum: 0.870kg (1lb 15oz)

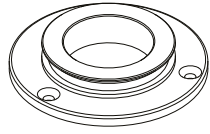
Cop: 2.290kg (5lb 1oz)

SS: 2.170kg (4lb 13oz)

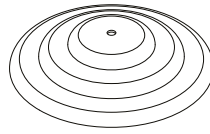
ACCESSORIES



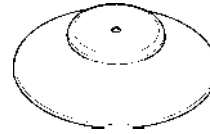
Flange Mount



Flange Mount 90

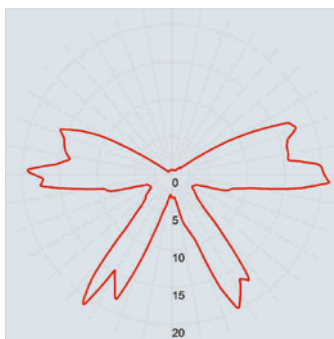


Hood 140mm Contoured



Hood 140mm Smooth

BEAM ANGLES

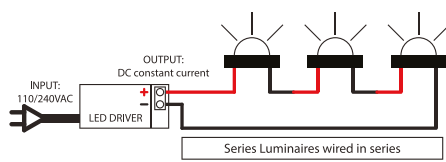


Polycarbonate lens

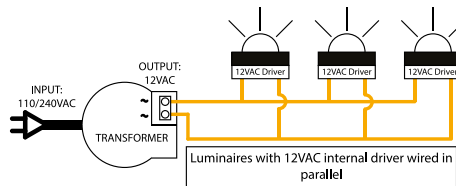


WIRING GUIDE

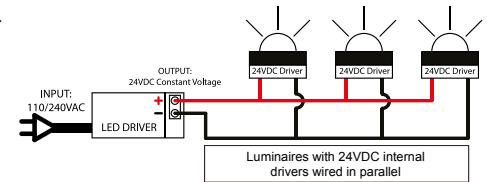
Series/remote driver



12v integral driver



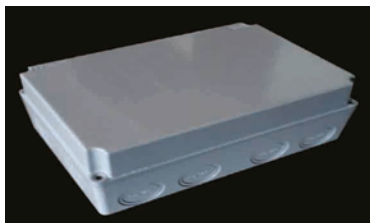
24vdc integral driver



Diagrams are a guide only, wire colours and polarity may change depending on fixture and country

HUN1050DALI/EN CONSTANT CURRENT DRIVER

Cat. No. TCI-122413
TCI-122413EN



Driver with weather-proof enclosure
(Cat. TCI-122413EN)
Dimensions: 175mmx125mmx100mm
7" X 5" X4"

The HUNZA TCI-122413 is a 25-50 Watt electronic, constant current, remote driver available to power Hunza series version PURE LED fixtures. It includes a DIP-SWITCH control system that enables the unit to be set at a range of current outputs from 350mA to 1050mA. 1-10v and Dali dimmable.

For exterior use, it is highly recommended to install this in a weatherproof box, available as an option from Hunza. The PC-17-02 weatherproof box is a requirement for UL compliance. When this driver is used as a remote power supply, SERIES WIRING is required to connect the fixtures. Please refer to the Hunza PURE LED Series Wiring page for more information on wiring diagrams and fixture loads per driver.

Key specifications:

Input Voltage: 99-264Vac 50-60Hz, 170-280Vdc
Output Voltage: 0V-74V dc (depending on DIP-SWITCH setting)
Output Current: 350 – 1050mA (depending on DIP-SWITCH setting)
Wattage: 25W – 50W (depending on DIP-SWITCH setting)
Temperature range: -25...+50°C, max 85°C
Driver Weight: 0.15kg (5.3oz)
Standards: IP20, RCM (C-Tick), EN, CE, CSA, UL Recognized
Ordering Code: TCI-122413EN

NOTE: At 120 volt input, the maximum wattage reduces to 40 watts



Specific Technical Data (at 120v input)					
Type	Output	Tolerance	Typ. power	Output voltage range	Operating temperature
Current Output	350 mA	± 6 %	25 W	0 – 74 V	-25 ... +50 °C
Current Output	500 mA	± 5 %	35 W	0 – 72 V	-25 ... +50 °C
Current Output	700 mA	± 5 %	40 W	0 – 57 V	-25 ... +50 °C
Current Output	900 mA	± 5 %	40 W	0 – 44 V	-25 ... +45 °C
Current Output	1,050 mA (default)	± 5 %	40 W	0 – 38 V	-25 ... +45 °C

By using the dip switches, the driver can be set to the current outputs in the table above. The input voltage is 99-264 vac and it has DALI or 1-10 volt dimming functions. It is recommended to be used in a weather-proof enclosure (Cat. HUN1050DALIEN). USA/Canada customers will need to order the Polybox PC-17-02 enclosure.

The table below states the minimum and maximum number of XHP/XPG fixtures you can run at a certain current output. For example, at 350mA you can run up to a maximum 11 fixtures with XHP and up to a maximum 22 fixtures with XPG chips.

