



Fixture Type
Materials
Finish

Interior linear LED strip
Aluminium
Silver
*consult factory for other finishes

Lamp Type
Lamp Quantity
Lamp Included
Wattage
Input Voltage
Delivered Lumens
Kelvin
CRI
Power S Type
Power S Quantity
Power S Location
Dimming Type

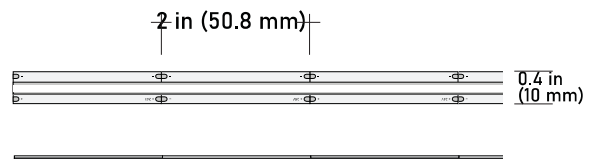
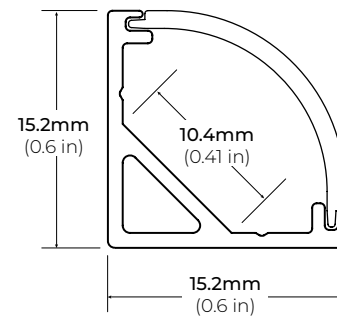
LED
n/a
Yes
3.2 W/ft
24 VDC
250 lm/ft
2700 K
95
Driver
Up to 25 ft
Remote
ELV

Designer

Core

Listings

UL
JA8 Listed
DRY





FEATURES

- Customizable
- Durable, anodized aluminum
- Protects LED systems from dust and other elements
- Slim, low profile design
- Dissipates heat from LED, prolonging its lifetime

SPECIFICATIONS

TYPE	Surface/ Corner Mount
AVAILABLE LENGTHS	48 in./ 84 in./ 98.5 in.
FINISH	White/ Black/ Silver
LENS OPTION	Frosted
CHANNEL	ALP50C-V2
LENS	ALP50C-LN (Frosted)
END CAP	ALP50C-V2-EC (Included)
MOUNTING CLIPS	ALP50C-CL (Included)
WARRANTY	5 Years

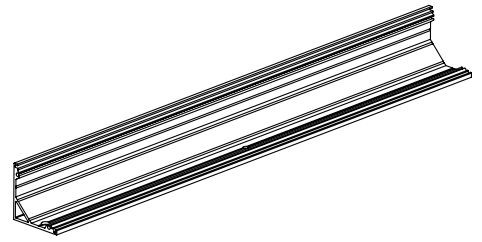


MODEL	LENGTH	LENS	FINISH
ALP50C-V2	49 49 in.	FR Frosted Lens	WH White
	84 84 in.		BK Black
	98 98.5 in.		SI Silver
			CU Custom (Powder Coat)



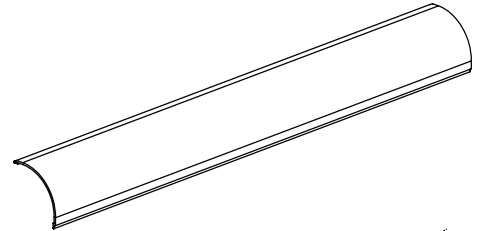
COMPATIBLE ACCESSORIES

ALP50C-V2
ALUMINUM CHANNEL



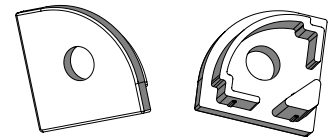
ALP50C-LN
PLASTIC LENS

*INCLUDED WITH EVERY PROFILE



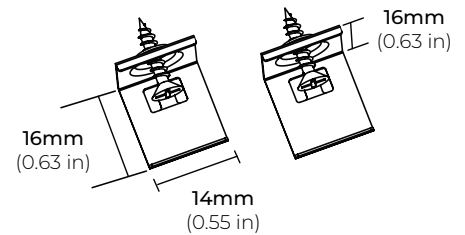
ALP50C-V2-EC
END CAP

*INCLUDED WITH EVERY PROFILE



ALP50C-CL
METAL MOUNTING CLIPS

*INCLUDED WITH EVERY PROFILE



SPECIFICATIONS

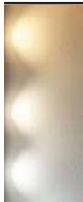
INPUT VOLTAGE	24V DC
POWER CONSUMPTION	3.2 per foot
LUMEN OUTPUT	(27K) 272 Lm/Ft. (30K) 292 Lm/Ft. (40K) 297 Lm/Ft.
BEAM ANGLE	180°
CRI	90+
DIMMING	MLV, ELV, 0-10 and TRIAC
MAXIMUM RUN LENGTH	16.4 Feet
FIELD CUTTABLE	Every 2 in
IP RATING	IP54 dry location (indoor)
LUMEN MAINTENANCE	50,000 hrs.
OPERATING TEMPERATURE	-40°F(-40°C)~+140°F(+60°C)
BINNING	2 Step Macadam Elipse
CERTIFICATIONS	UL listed, TITLE 24 JA8
DIMENSIONS	0.4" x 0.08 (width x height)
WARRANTY	5 Years

Delivering a solid stream of linear light, the LSM32CB features the latest in COB technology for total linear diffusion in a low profile package. Fits profiles up to 0.4" (10mm) wide.

FEATURES

- 3.2W per Foot
- 90+ CRI
- California TITLE 24 JA8 compliant
- Field cuttable
- Suitable for accent or ambient lighting
- 27K, 30K and 40K CCT options available
- Available in 24V
- UL Listed
- Dimmable with CORE Lighting dimmable drivers



	COLOR TEMP	CRI	LUMEN/FT
	2700K	90	272
	3000K	90	292
	4000K	90	297

STANDARD ORDERING CODE

Model	Color Temp	Length	Voltage	Profile
LSM-32CB	27K 2700K	16 16.4 Ft.	24 24 Volts	²See p3 for options
	30K 3000K	100 100 Ft.		
	40K 4000K	¹ XX per Ft.		



SPECIFICATION SHEET



PSDL SERIES indoor/outdoor drivers are highly efficient, stable with smooth dimming capability compatible with most TRIAC, ELV, MLV, reverse and forward phase dimmers, and on/off switches. These drivers are derated allowing them to be loaded to maximum wattage capacity.

FEATURES

- High power factor/efficiency
- Short circuit and over current protection
- 100~277V AC for any residential or commercial application
- Superior PWM dimming technology
- Factory derated
- Only 10% minimum load
- Compatible with TRIAC, MLV and ELV dimmers
- Flicker-free dimming

INPUT

INPUT VOLTAGE RANGE	100~277V AC
INPUT FREQUENCY RANGE	47~63 Hz
POWER FACTOR (AVG.)	≥0.99 (120VAC); ≥0.94 (277VAC)
AC CURRENT (MAX.)	1.8A (100V AC)
INRUSH CURRENT	15A, 50%, 1.4ms
LEAKAGE CURRENT	<0.5mA

OUTPUT

OUTPUT VOLTAGE	24V DC
OUTPUT CURRENT @ MAX LOAD	6.25A
OUTPUT MAX WATTAGE	150W
MINIMUM LOAD	10%
MAXIMUM LOAD	100%

ADDITIONAL SPECIFICATIONS

ENVIRONMENT	Outdoor Rated IP65
DIMMING	ELV, MLV & TRIAC
SHORT CIRCUIT	Short Circuit auto recovery
WIRE TERMINAL CONNECTION	Fits up to 12AWG
HOUSING / COOLING	Free-air convection

SPECIFICATIONS

CLASS 2	NO
LOAD REGULATION	2%
LINE REGULATION	5%
INPUT FREQUENCY	47~63 Hz
POWER FACTOR	>0.92
EFFICIENCY	>83%
MTBF	50,000 hrs.
OPERATING ENVIRONMENT	-40°F ~ 140°F (-40°C ~ 60°C)
FUNCTION SURFACE TEMP	-40 to +80 (25 C AMB)
STORAGE TEMPERATURE	-40°F ~ 176°F (-40°C ~ 80°C)
HUMIDITY	20~90% RH, non condensing
LENGTH	10.25" (260.3MM)
WIDTH	4.06" (103.2MM)
HEIGHT	1.82" (41.1MM)

MISC

SAFETY STANDARDS	UL-8750, UL 1310
WITHSTAND VOLTAGE	I/P-O/P : 1.88KV AC
EMC EMISSION	FCC Part 15 B
WARRANTY	5 year Limited

